

45

MADISON AVENUE

NOMAD
NORTHEAST CORNER OF 26TH STREET
51MADISONAVE.COM



EXCLUSIVE LEASING AGENT:



CUSHMAN & WAKEFIELD

45

MADISON AVENUE

16,343 SF
AVAILABLE

ADJACENT TO
ENTRANCE OF
**MADISON
SQUARE
PARK**

**DIRECT ACCESS
6 SUBWAY**
ENTRANCE
IN LOBBY

1 BLOCK FROM
**WHOLE
FOODS
MARKET**
OPENING 2020



45

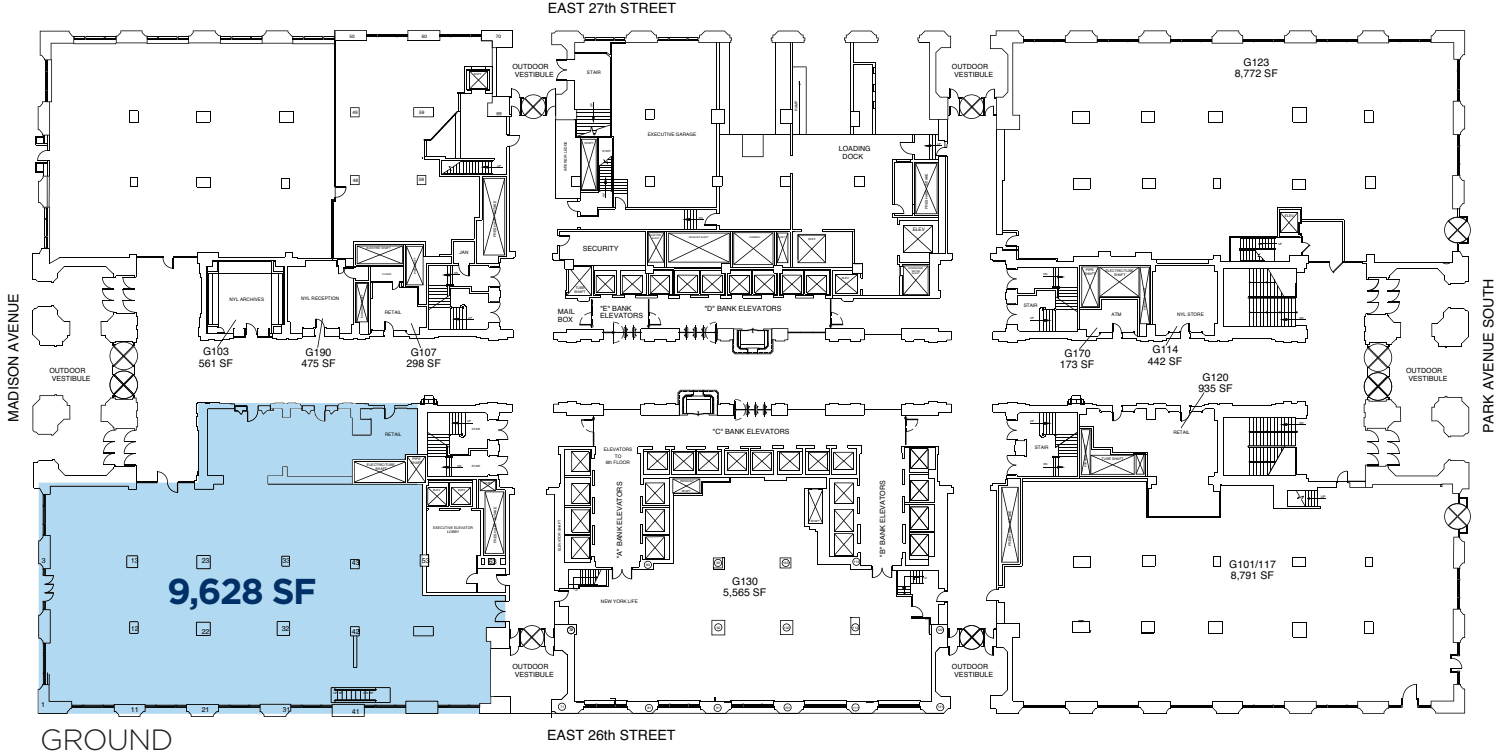
MADISON AVENUE
FLOOR PLANS

MEZZANINE
3,378 SF

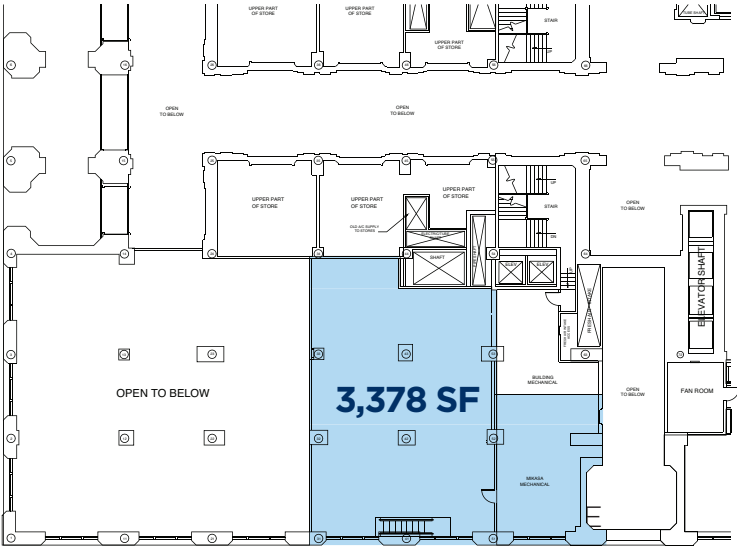
GROUND
9,628 SF

LOWER
3,337 SF

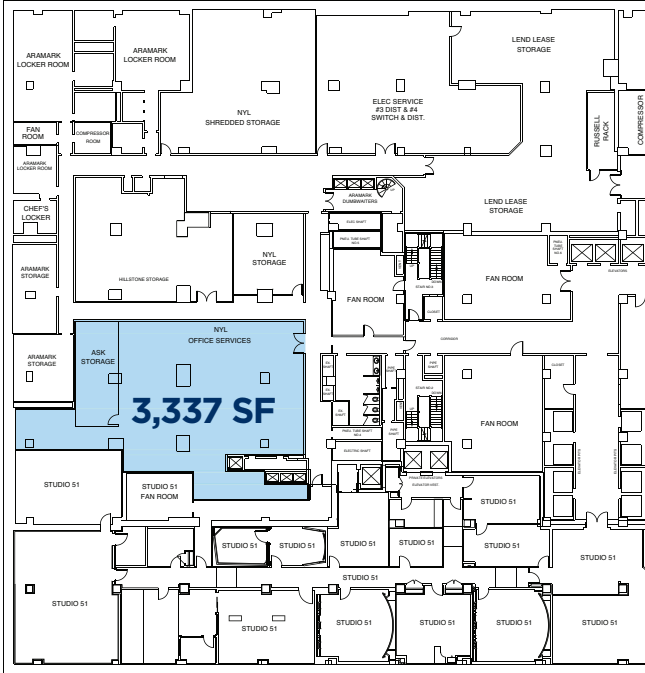
FRONTAGE
70' ON MADISON AVENUE
125' ON 26TH STREET



GROUND



MEZZANINE



LOWER

45

MADISON AVENUE
RETAILER MAP



45

MADISON AVENUE

51MADISONAVE.COM

EXCLUSIVE LEASING AGENT:



**CUSHMAN &
WAKEFIELD**

ANDREW KAHN

+1 212.841.7732

andrew.kahn@cushwake.com

CHRISTIAN B. STANTON

+1 212.841.5949

christian.stanton@cushwake.com

www.CushmanWakefield.com